

## Board of Directors, Executive Officers, and Corporate Auditors



Chairman  
Michio Tanabe



President and Chief Executive Officer  
Junji Ueda

### Chairman

Michio Tanabe

### President and Chief Executive Officer

Junji Ueda

### Senior Managing Directors and Senior Managing Executive Officers

Shisaburo Ueda  
Shinichiro Harima  
Takayuki Yokota

### Managing Director and Managing Executive Officer

Shiro Inoue

### Directors and Managing Executive Officers

Masatsuna Seki  
Yasuhiro Kobe  
Yoshiki Miyamoto  
Toshio Kato  
Motoo Takada

### Managing Executive Officers

Masaaki Kosaka  
Akinori Wada  
Takeshi Takasugi  
Jin Tin Pan

### Senior Executive Officers

Kazushige Ueno  
Katsuo Ito  
Masataka Uesugi

### Executive Officers

Kimichika Iwakiri  
Hisashi Suzuki  
Masami Fujimori  
Tomoyuki Kimura  
Mitsuji Hirata  
Hidemitsu Ozawa  
Takehiko Kigure  
Masanori Sugiura  
Goichi Itokazu  
Toru Ichikawa  
Shigeyuki Ushimaru  
Yoshihito Nakahira

### Standing Corporate Auditors

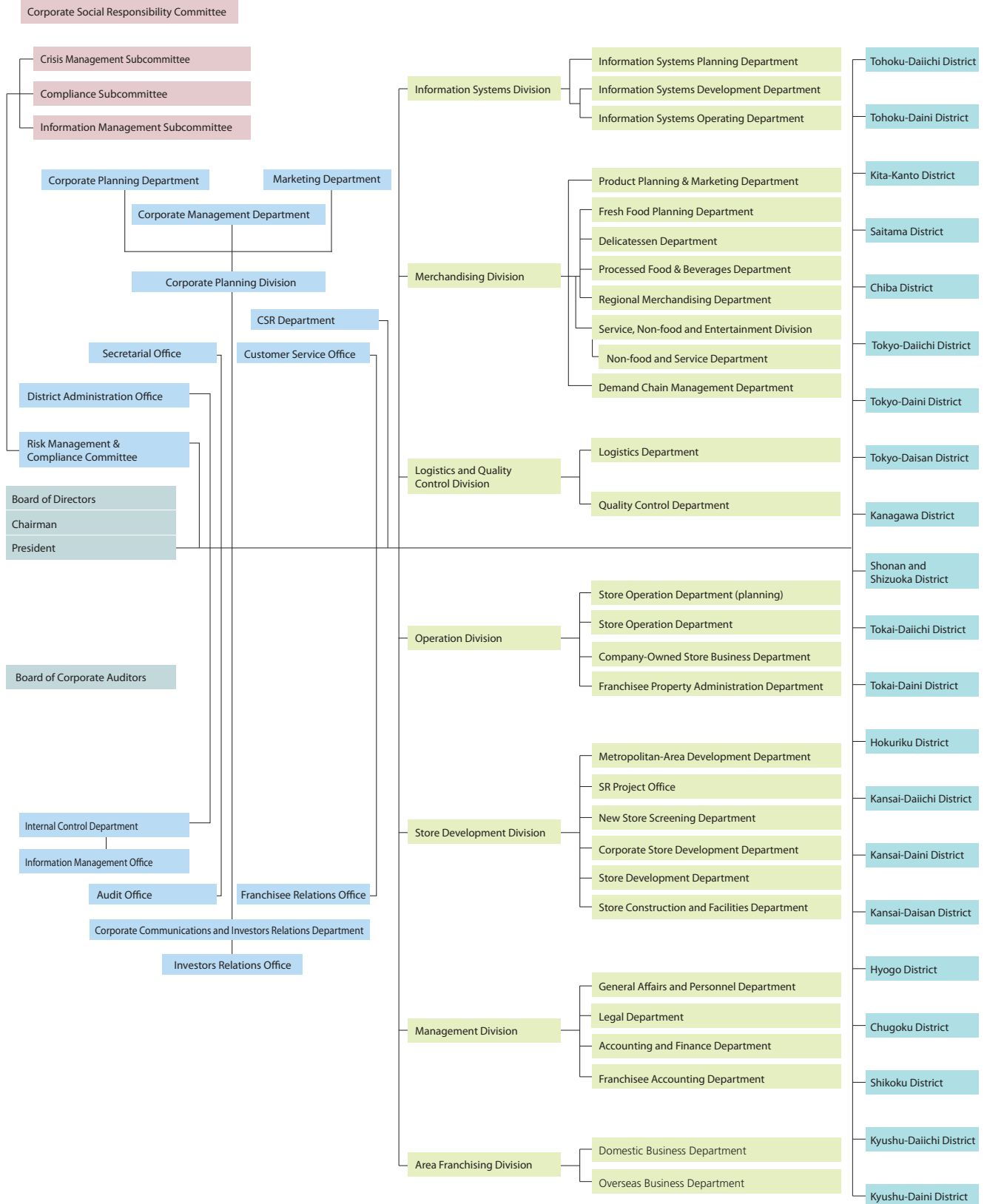
Noboru Nishioka  
Masahiro Asano  
Shota Takahashi

### Corporate Auditor

Takashi Endo

(As of June 1, 2008)

# Organization



(As of June 1, 2008)